



# MEECH HOUSE

at Mungo Park



Opening January 2021, the Meech House is an intimate meeting space perfect for weddings and social gatherings. Whether you are planning a small gathering, business meeting, corporate retreat or wedding reception, the Meech House at Mungo Park is the perfect option. Located in a beautiful park like setting on the former Rawl's Creek Golf Course, the Meech House adds a peaceful "get away from it all" feel to any event. Convenient to I-26, and close to a wide selection of restaurants, hotels and shopping, the facility features 3,138 sf of meeting space, a catering kitchen, and an expansive outdoor deck and patio area.

### Meech House Rental Rates

	Mon.-Fri.	Saturday	Sunday
8:30 A.M.-4:30 P.M.	\$100/hour (4 hr. min.)	\$2,000	NA
5:00-11:30 P.M.	\$150 hour (4 hr. min.)	NA	NA
8:30 A.M.-11:30 P.M.	NA	\$2,400	NA
12:00 P.M.-11:30 P.M.	NA	NA	\$2,000

For a meeting facility that offers both a unique atmosphere and an escape from the hustle and bustle of everyday, consider the Meech House at Mungo Park.

### Amenities Include

- 3,138 sq. ft. of meeting space
- Small conference room
- Wireless Internet
- Outdoor deck and courtyard
- Fully-equipped catering kitchen
- Men's and Women's dressing rooms/restrooms
- Ample convenient parking

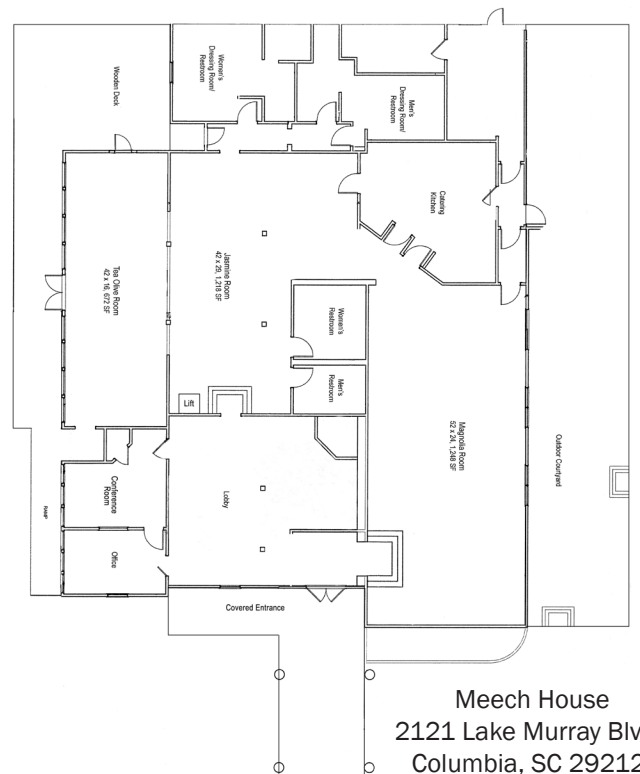


### Finding the Meech House

From Columbia, take I-26 west toward Spartanburg. Take exit 102A from I-26 W to SC-60 W/Lake Murray Blvd. Follow SC-60 W/Lake Murray Blvd approximately 2.9 miles. The entrance to Mungo Park will be on the left.

### Reservations

To book your next event or to learn more about the Meech House, call 803-213-2025 or visit [www.icrc.net](http://www.icrc.net).



Meech House  
2121 Lake Murray Blvd,  
Columbia, SC 29212