

SAFARI PROGRAM REGISTRATION INFORMATION



PROGRAM & GOALS

It is the goal of Safari to provide a safe and nurturing environment that offers a variety of opportunities for children to grow physically, socially, academically and emotionally. This is accomplished through supervised, quality programs designed to encourage new interests, creativity, self-confidence and responsibility.

Our afterschool daily program includes an afternoon snack, nutrition education, supervised homework time, and socially distanced recreation and organized physical activity. The children are grouped by age. Activities include arts & crafts, reading, character building exercises and organized games.

Our Full Day daily program (Available at Crooked Creek Park and Seven Oaks Park only) includes a morning snack, lunch (Seven Oaks Park only), and afternoon snack. Internet access and socially distanced supervised virtual classroom time will be available. ICRC safari staff are available for assistance but cannot be expected to provide tutoring or teaching services during the full-day programming. Children are grouped by age.

Therapeutic Recreation programming is available at Seven Oaks Park and Crooked Creek Park for students with disabilities and special needs, whose needs cannot be accommodated by a traditional 1:10 staff-to-student ratio. Full-day programming is not currently available. Afterschool programming will be available Monday/ Tuesday/ Thursday/ Friday for those students attending school that same day. Activities include socially-distanced recreation and organized physical activities, supervised homework time, arts and crafts, and an afternoon snack. Registration is limited.

HOURS

Safari afterschool begins immediately after school and runs until 6:00 P.M. Full day safari program begins at 7:30 A.M. and runs until 600 P.M.

STAFF & RATIOS

Our staff includes teachers, school district employees, adults, college students and high school students. We maintain a ratio of 1:10 for all ages grades K-6 during afterschool hours, 1:15 ratio during instructional time for full day services. Therapeutic Recreation maintains a 1:5 ratio. Select staff are first aid and CPR certified.

PICK-UP POLICY ATTENDANCE & (LATE) PAYMENT POLICY

Please select your payment plan for the duration of the school year. Two plan changes per child will be allowed during the school year. Students will be charged the weekly rate regardless of attendance. There is no exception to this policy.

Payment is due the Monday prior to the week service is provided. Failure to make your payment by Friday at 6:00 P.M. will result in a \$5 late fee. After two consecutive weeks without payment, your child will no longer have a reserved space in the Safari program. Accounts must carry a zero balance to be considered in good standing. Repeated late payment may be grounds for permanent dismissal from the program.

Payments are accepted Monday through Wednesday at the school (checks only) and park sites. Payments made after Wednesday must be made at Seven Oaks Park or Crooked Creek Park. Include your child's name, phone number and school on your check/money order payable to ICRC. Online and phone payments with credit card can also be made, contact CCP at 803-345-6181 and SOP at 803-772-3336 for details.

Afterschool Programming: *(available during LexRich5 Hybrid Model)*
Fees will be charged for 38 weeks regardless of attendance
\$22/per child per week; \$16/per child per week for those who qualify for financial aid
Therapeutic Recreation: \$16/per child per week
Interim rate available for LexRich5 District employees only. Call for details.

Full Day Programming: *(available during LexRich5 Hybrid Model)*
Monday through Wednesday, Wednesday through Friday, or Monday through Friday programming is available.

3 Day Programming: \$75/per child per week; \$45/per child per week for those who qualify for financial aid

5 Day Programming: \$125/per child per week; \$75/per child per week for those who qualify for financial aid

***PLEASE NOTE: Credits are not given for missed days or weeks in any Safari Program.** Separate fees and registration are required for winter, spring break and summer camps.

FINANCIAL AID

Safari offers a reduced rate to those students who qualify. The rate is effective from the Monday following the date you provide us with the qualifying information.

RETURNED CHECKS

If your check is returned by the bank for insufficient funds, it will be submitted to the Lexington County Solicitor's Office for collections. All fines and penalties are the responsibility of the check writer. Safari services will be suspended until ICRC receives payment from the Solicitor's Office. After two returned checks (per account), payment must be made in the form of cash or money order at Crooked Creek Park or Seven Oaks Park only.

TAX STATEMENTS & WEEKLY RECEIPTS

Year-end tax statements and weekly receipts will be available through your online account. Tax ID #:

PICK-UP POLICY

For pick-up, parent will drive up and call site phone, provide pick-up verification password by parent/guardian and child will be brought out to the car. Children must be signed out no later than 6:00 P.M. by someone listed on their authorized list. Everyone on the pick-up list must be at least 16 years of age. ICRC requires a pick-up password, and identification may be required for anyone picking up a student at a Safari location. If you are going to be late, a phone call is required. Late sign out after 6:00 P.M. can result in late pick up fees. Frequent tardiness and late sign out can result in suspension. If we cannot reach a parent or emergency contact after Safari closing hours, the sheriff's department will be called to pick up your child.

Your child's safety is very important to us. In order to ensure that we have accounted for every child during pick up we must have an accurate roster. Parents are required to notify program staff if their child will not be at Safari or has a change to his/her schedule.

- Please communicate any planned absences or change in your child's schedule in writing to Safari staff.
- In the event of a last minute change, please leave a message on the Safari phone (directory available at end of information form).

SCHOOL CLOSING POLICY

If Lexington Richland District 5 closes school early or cancels school for any reason, Afternoon Safari will be closed at the school sites. Safari programs may be available at the park sites. If the decision is made to close school early, school staff will contact you to pick-up your child. It is important that each

family have a contingency plan on file, preferably with your child's teacher, describing where and with whom your child should go in the event of an early school closing.

STUDENT HOLIDAYS

Student Holidays require separate registration and additional fees apply. Please contact Crooked Creek Park or Seven Oaks Park for specific dates and how to register.

MEALS & SNACKS

A healthy snack is offered to each child during safari programming. On afterschool days an afternoon snack will be provided. On full days, a morning and afternoon snack is provided and lunch will be provided at Seven Oaks Park, with the exception of in-service days. Children at Crooked Creek Park are required to bring their lunch. Microwave and refrigerator are NOT available. If your child does not have a lunch, one will be provided and your account will be charged \$6.00. Select days a pizza may be available for purchase. Pre-purchase/registration is required. Check with the Safari desk for details.

MEDICATION

Medication will not be administered at Safari without an ICRC health form on file. Medication must be sent in its original container. Epi Pens & Inhalers will need to be in a bag with their name on it. Safari staff are not trained to administer injectable medication. If child cannot self-administer medication, please contact Safari staff to discuss prior to child's first day of camp.

MANAGEMENT OF COMMUNICABLE DISEASES

A child should not attend Safari if he/she has any of the following symptoms: fever, vomiting, diarrhea, sore throat, undiagnosed rash, inflamed/matted eyes and/or severe cold. If a child becomes sick at Safari, a parent/guardian or emergency contact will be called to pick-up the child. Additional COVID-19 related guidelines and procedures will be provided at registration. Parents are required to read and sign the COVID waiver.

RECORDS

We must have a registration/liability form on file for every student attending Safari programs. It is important that we have accurate information in the event of an emergency. Please notify us immediately of changes in phone numbers, address, etc.

BEHAVIOR MANAGEMENT

School rules are extended to Safari programming so students are not asked to learn two sets of rules. Each child/parent is required to read and sign the Safari Behavior Agreement at registration. A complete list of rules, regulations and guidelines can be found in the Safari Parents Manual available online at www.icrc.net/after-school-programs.

DISCIPLINE PROCEDURES

School rules are extended to Safari so students are not asked to learn two sets of rules.

- Staff is expected to treat children and their families with respect.
- Children are expected to respect the staff, the rules and each other.
- Discipline procedures include verbal warning, "time-out", loss of privileges, a phone call to parents, parent conferences and discipline forms.
- Our staff will handle any behavior/discipline problems to the best of his or her ability within Safari guidelines. Parents are not permitted to approach other students in an effort to resolve these matters.
- Discipline forms are completed for repetitive or serious discipline problems. Parents are required to sign the discipline form to acknowledge that they have been made aware of the problem.
- If a student receives three discipline forms, he or she will be suspended for two days. A fourth discipline form will result in a one week suspension. A fifth form may result in expulsion from Safari programs for a full calendar year. ICRC reserves the right to remove a child from Safari at any time.
- Behavior that may result in immediate expulsion include, but are not limited to, physical violence, use or possession of drugs or alcohol, weapon possession, vandalism/ destructive behavior, sexual misconduct or threatening behavior.
- Physical contact in disciplining the children is avoided, but may be used to restrain students from harming themselves or others.

A complete list of rules, regulations and guidelines can be found in the Safari Parents Manual available at www.icrc.net/after-school-programs.

ACCIDENTS/EMERGENCIES

In the event a child is involved in an incident and/or injured, our staff will assess the injury and administer basic first aid or call emergency personnel.

In an EMERGENCY, or if a parent/guardian or emergency contact cannot be reached, 911 will be called. All medical expenses and ambulance fees will be the sole responsibility of the parent/guardian.

ICRC does not provide accident insurance to our participants. We do, however, offer all participants the opportunity to purchase supplemental accident insurance during the application process.

PARENT INVOLVEMENT & COMMUNICATION

We believe in a strong partnership between parents and staff. The Safari programs have the following opportunities for mutual communication.

- Parents may request a conference with the site supervisor or assistant site supervisor at any time to discuss their child or the program.
- Please take time to participate in our surveys. Your feedback is important in evaluating our programs.
- We use a message board on site and email to communicate important information to our parents. Please take the time to check it daily.
- Our counselors are dedicated to interacting and caring for your children, so if you have any questions, concern or suggestions, please communicate with your site supervisor or assistant site supervisor.

CHILD ABUSE

Our staff is legally required to report any instance of observed or suspected child abuse/neglect to the appropriate authorities. This includes anyone attempting to pick-up a child while under the influence of drugs or alcohol.

DO NOT BRING

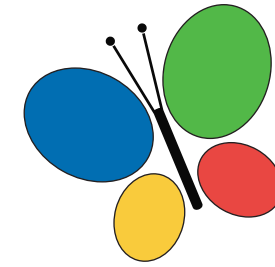
Money or other valuables items. Safari staff are not responsible for lost, stolen or damaged personal belongings and/or school issued devices.

SAFARI PROGRAM DIRECTORY

Safari Director: 803-345-8110
Ballentine Safari Program Cell Phone: 803-479-3469
Chapin Elementary Safari Cell Phone: 803-466-1271
Crooked Creek Park Safari Program Cell Phone: 803-586-1606
Irmo Elementary Safari Cell Phone: 803-513-9080
Lake Murray Safari Cell Phone: 803-466-9530
Oak Pointe Safari Program Cell Phone: 803-476-5371
Seven Oaks Elementary Safari Cell Phone: 803-479-3037
Seven Oaks Park Safari Program Cell Phone: 803-586-1608

THERAPEUTIC RECREATION DIRECTORY

Therapeutic Recreation Administrator: 803-213-1194
Therapeutic Recreation Cell Phones:
Seven Oaks Park: 803-518-2705
Crooked Creek Park: 803-528-6228



2020-2021

AFTERNOON SAFARI

REGISTRATION INFORMATION

Ballentine Elementary
Chapin Elementary
Crooked Creek Park
Irmo Elementary
Lake Murray Elementary
Oak Pointe Elementary
Seven Oaks Elementary
Seven Oaks Park
Therapeutic Recreation

