

Programs and Payment Information

ELIGIBILITY

Summer Safari is open to children in rising K-5th grade and Extreme Safari is open to children in rising 6-9th grade.

GENERAL

Summer and Extreme Safari participants will be divided into age groups as they rotate through daily planned activities. Areas include sports, outdoor games, arts and crafts, nature programs, indoor activities and themed activities.

To allow for safe, enjoyable participation, groups will be assembled by age/grade at the discretion of the camp directors. We are unable to honor requests for a specific group or to be with another camper as children may not be in the same group each week.

INSTRUCTIONAL PROGRAMS

Special programs and activities may be scheduled throughout the summer. If there will be a special offering outside of regular schedule, information will be shared through sign boards, calendar updates and email.

SWIMMING AND WATER PARKS

Water-based field trips will be offered several weeks during the summer and include local pools, splash pads, and water parks. Older groups will go to the pool and younger groups will visit the splash pad. If your child cannot apply his/her sunscreen, please apply it at home prior to arriving at camp. Campers must wear swimsuits. Shorts and shirts are not allowed at water parks. One piece swimsuits only for Extreme Campers.

FIELD TRIPS

Please note the special activities and field trips are subject to change without notice. Please discuss with your child the importance of good behavior for their safety and the safety of others. Behavioral issues may result in a loss of field trip

privileges. If you child is not able to attend a field trip (i.e. missed departure time, scheduled doctors appointment during field trip) you must find alternative care. We do not have additional staff scheduled and we will not place your child in another group that is on-site.

WEEKLY FEES

The weekly fee for summer camp is \$151/child. There are no part-time, hourly or reduced rates. Please deduct the \$25 deposit for each reserved week your child attends.

MAKING YOUR PAYMENT

Payment is due the Monday prior to each week your child participates in camp. (E.G. Payment for the week of June 2nd is due Monday, May 26th). Your child will not be permitted to stay without full payment. Checks and money orders should be made payable to ICRC and include your child's name. If payment is not made by the due date, you will forfeit your child's spot for that week. Deposits are non-refundable.

ICRC does NOT issue refunds (full or partial) during summer camp. Payments may NOT be transferred to Afternoon Safari accounts or to later weeks of Summer or Extreme Safari.

RECEIPTS

Year end tax statements and receipts can be printed online at www.icrc.net. ICRC's Federal Tax ID# is: 57-0520972.

RETURNED CHECKS

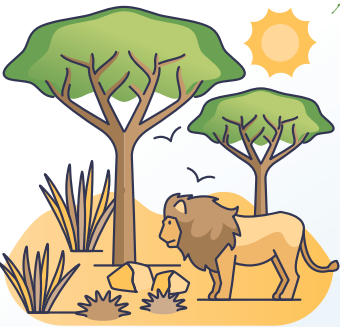
If your check is returned by the bank for insufficient funds, it will be submitted to the Lexington County Solicitor's Office for collections. All fines and penalties are the responsibility of the check writer. ICRC's fee for a returned check is \$35. Camp services will be suspended until ICRC receives payment from the Solicitor's Office. After one returned check (per household), payment must be made in the form of credit card, cash or money order.

EcoExplorers

A Summer Safari Adventure Across Ecosystems

June 2-August 6, 2025

Crooked Creek Park | Seven Oaks Park



Savanna



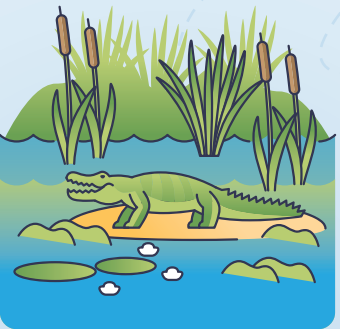
Arctic



Forest



Mountains



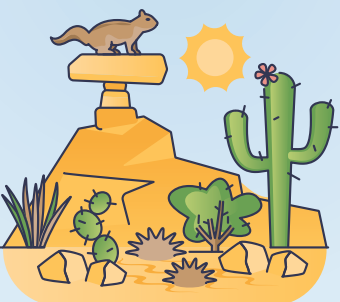
Wetland



Coastal



Rivers, Lakes, Streams



Desert



Rain Forest

Location Information

SEVEN OAKS PARK

Seven Oaks Park is located at 200 Leisure Lane, near the intersection of St. Andrews and Piney Grove Roads. This community center offers one full gym and one double gym, activity areas, six baseball/softball fields, a soccer field, football field, playgrounds and picnic shelters. Campers will be transported to Saluda Shoals Park for programs and to visit Saluda Splash.

CROOKED CREEK PARK

This community center and athletic complex features a double gymnasium, racquetball courts and more. Campers will use the back part of the building including theater, gym and art studio. Outdoor activities may use athletic fields, picnic areas, walking trails and playgrounds. Children will visit Melvin Park and the splash pad.



Summer Safari 2025

We are excited that your child will be joining us at either Summer or Extreme Safari and looking forward to an adventure-filled summer exploring the world. Whether your child is a returning camper or new to the Safari program, we are happy to welcome you and eager to meet our newest campers! Since we will be spending the summer together, we wanted to tell you a little bit about our summer day camp programs.

OUR PROGRAM

Summer and Extreme Safari are recreation based camps with a philosophy of PLAY. Through play we can empower children and encourage emotional and physical development. We want to engage your child in fun and educational programs that will foster a positive sense of self.

WEEKLY FIELD TRIPS

Each week of camp will offer a different theme with outdoor adventures, physicals activities, art and fun. Please note that field trips are subject to change and dependent on weather.

OUR STAFF

Our camp counselors are local adults, K-12 teachers, and high school and college students who are all ready for a fun-filled summer season! Many of our summer staff work in our Afternoon Safari program and have experience in child care. Our counselors also go through an application process that includes interviews, reference checks and background checks to ensure the safest experience for everyone.

In addition, counselors go through training before summer begins covering topics that empower them to create a physically safe and emotionally nurturing environment. There is First Aid and CPR certified staff with the campers, but more importantly staff is trained to prevent accidents through active supervision of camp activities. Groups are connected to each other by two-way radios and/or cell phones.

It is Irmo Chapin Recreation Commission’s goal to maintain an overall camper to staff ratio of 13:1 for Summer Safari and 15:1 for Extreme Safari. Campers are put into groups based on their age/grade and are engaged in age appropriate games, crafts, and activities.

PARENTS

Your child is our customer this summer and the safety of our campers is our #1 priority. Please don’t be offended if we ask for your pick up password or to see your identification when you pick up your child. As far as we’re concerned we can’t be too careful!

Parent support is the key to a successful program, so we ask for your help in remaining positive about camp activities and camp

in general. If you ever have a concern, please contact us so that we can take care of it immediately. We are only as good as the information we are given, so please communicate with us and let us know what’s going on! We will always be available to talk with you regarding your child’s camp experience. Contact us using the following information.

Staff & Contact Information

SEVEN OAKS PARK

Safari Cell Phone: 803.586.1608

CROOKED CREEK PARK

Safari Cell Phone: 803.586.1606

Administration:

Josh Brewton, Irmo
Phone: 803.213-1187
Email: jbrewton@icrc.net

Jennifer Riddle, Chapin
Phone: 803.345-8107
Email: jriddle@icrc.net

Important Dates!

Payment for the first week of camp is due on May 26, 2025. You may pay over the phone, online or visit our park locations. Updates and other special camp information will be emailed and available prior to the first day of camp.

What to Bring

EVERYDAY

- Lunch and beverage in insulated lunch bag (no coolers, please) Lunch is provided at Seven Oaks Park Mon.-Fri.
- Water bottle
- Swimsuit and towel (one piece swimsuit for Extreme Safari)
- Change of clothes
- Sunscreen
- Insect/Tick repellent
- Please use backpack style bag for belongings.
- Label all items with your child’s name.

LUNCH

Children attending camp at Crooked Creek Park must bring a ready-to-eat lunch and beverage each day. Insulated lunch bags are recommended. Due to space limitations, NO COOLERS PLEASE. We do not have access to a microwave or refrigerator. If your child does not have a lunch, you will be called to bring one for your child. Lunch program is provided at Seven Oaks Park on most weeks. A pizza lunch is provided to campers the last day of camp each week.



SNACKS

A morning and afternoon snack will be provided each day.

DO NOT BRING

- Money or other valuables
- Cell phones
- Games, electronics or toys from home (children will not be able to use these items).
- Money sent for field trips is the personal responsibility of the child. Staff cannot carry or be responsible for any money sent.

CHILDREN MUST WEAR

Athletic shoes and socks everyday. NO SANDALS or open-toed shoes. Do NOT wear new or expensive shoes or clothing. Having fun can be messy!

PERSONAL BELONGINGS

All personal belongings (including glasses, hearing aids, retainers, etc.) are the responsibility of the child. ICRC will not be responsible for lost, stolen or broken items.

Medication & Emergencies

INJURIES

In the event that a child is injured, our staff will assess the injury and administer basic first aid if needed. Parents/guardians will be notified immediately if the injury is to the head or neck. Accident forms are completed in the event of injury.

EMERGENCIES

In an emergency, if a parent/guardian or emergency contact cannot be reached, 911 will be called. All medical expenses and ambulance fees are the responsibility of the parent/guardian.

MEDICATION

Medication will not be administered at Summer Safari or Extreme Safari without an ICRC medication form on file. Summer Safari staff are not trained to administer injectable medication.

INSURANCE

ICRC does not provide accident insurance for our participants. We do, however, offer all participants the opportunity to purchase supplemental accident insurance during the application process at the cost of \$6/per child.

Drop-off and Pick-up

HOURS

Safari will be offered Monday–Friday, 7:30 a.m.–6:00 p.m. Curbside sign-in will be available from 7:30–8:30 a.m. at Seven Oaks Park only. Parents will need to walk into the park to drop off and pick-up their children at Crooked Creek Park. A late pick up fee of \$1 per minute will be assessed after Safari closing hours.

PICK-UP/SIGN-OUT

Your child(ren) must be signed out everyday. We will release your child(ren) to only those on your authorized pick-up list. Please have pick up password ready and share with authorized pick up list. Everyone on the list must be at least 16 years of age. We reserve the right to ask for identification from anyone picking up a child.

Discipline

DISCIPLINE POLICY

Campers are expected to respect the staff, the rules and each other. Discipline procedures include “time-out”, loss of privileges, a phone call to parents and discipline forms. Discipline forms are completed for repetitive or severe discipline problems. Our staff will handle any behavior or discipline problem to the best of his or her ability. Parents are not permitted to approach other children in an effort to resolve these matters. For repeated/serious discipline problems, ICRC reserves the right to remove or suspend a child from Summer or Extreme Safari at any time. No refund will be issued if your child is removed. Physical contact in disciplining the children is avoided, but may be used to restrain children from harming themselves or others. If a student receives three discipline forms, he or she will be suspended for two or three days. A fourth discipline form will result in a one week suspension. A fifth form may result in expulsion from all Safari programs for a full calendar year.

